

CAMBRIDGE

1045 PLAN

Elevation A



Elevation B



Highlighted Features Include:

- 30' x 22' triple car attached garage
- Rear covered deck
- Open concept design
- Spacious mudroom with walk-in closet and laundry
- Main floor study option
- 10' raised ceiling in dining room and great room
- Primary bedroom with ensuite and walk-in closet
- 60 gallon hot water tank
- 200 amp panel
- Triple pane and dual pane Low-E windows
- 4" MDF baseboards and 3" casings
- 1-2-5-10 National Home Warranty



Bungalow



1,684 sq.ft. +/-



3 Bedrooms



2 Bathrooms

SOLID FOUNDATIONS START HERE

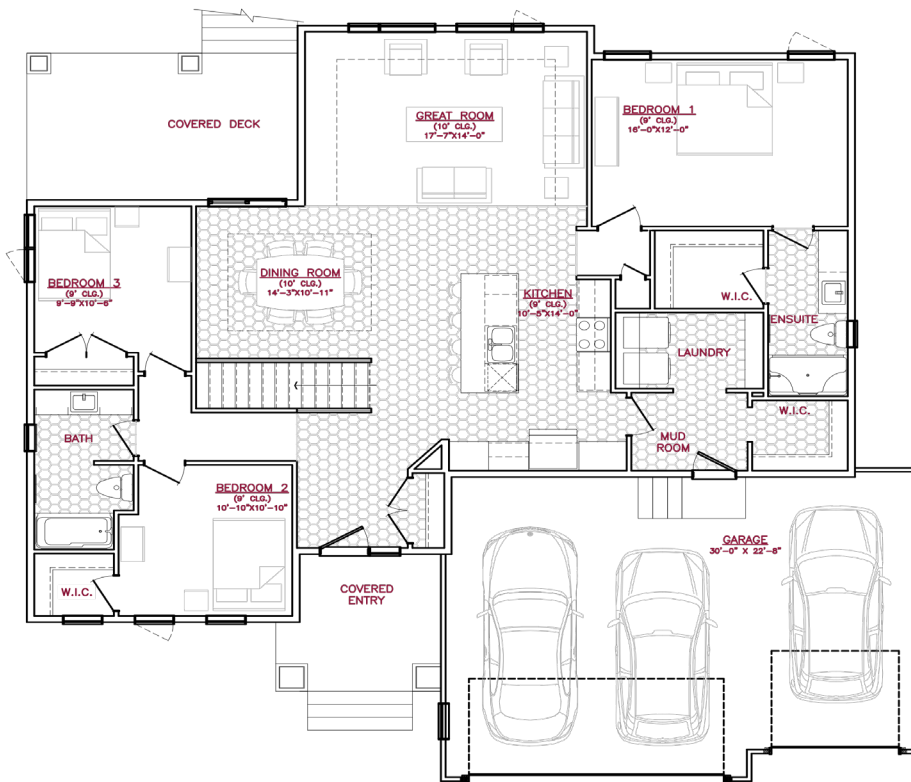


A QUALICO Company

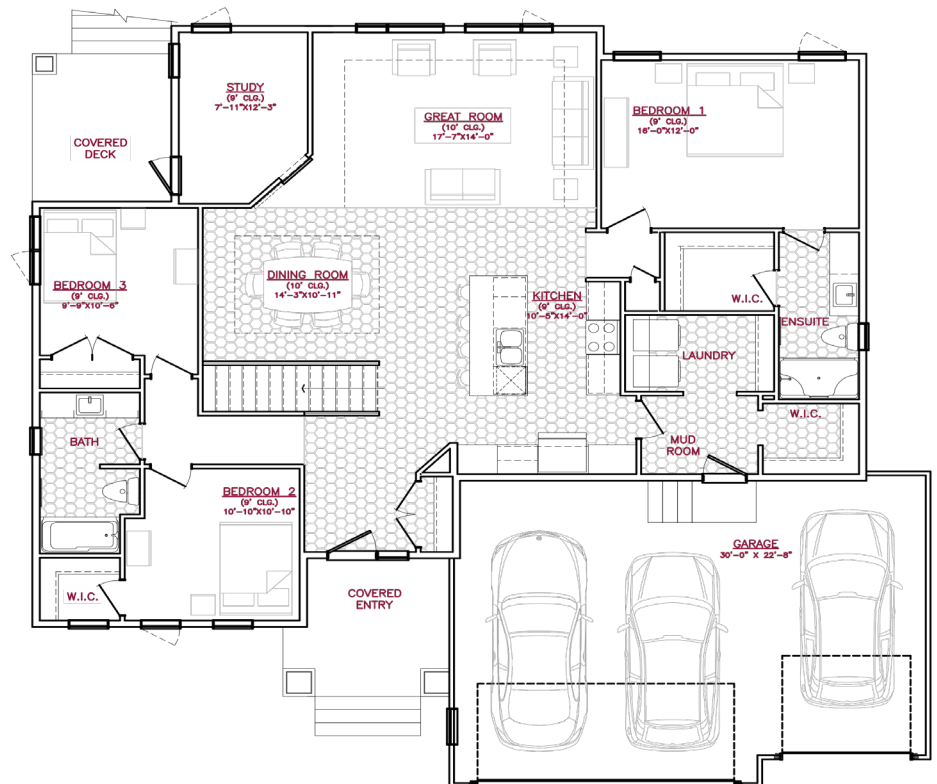
1045 PLAN



A QUALICO® Company



Main floor plan with study +105 sq.ft.



One Dr. David Friesen Drive
Winnipeg, Manitoba

Phone: (204) 224-4243
kensingtonhomes.com

All illustrations are artist's conception and may vary. Room dimensions are approximate. Windows and room sizes may vary with elevations. Mechanical equipment location and placement subject to change as required by building code and at discretion of builder. Furniture outlines for purpose of visualizing room layout only, furniture not included. Kensington Homes reserves the right to change material or specifications without notice.

Plan Rev-4/18/23