

CAPETOWN II

331 PLAN

Elevation F



Highlighted Features Include:

- 20' X 20' attached garage
- Large foyer
- Large designer kitchen with walk-in pantry and oversized island
- Spacious primary suite on private floor includes walk-in closet and ensuite
- LED lighting package
- 60 gallon hot water tank
- 200 amp panel
- 4" MDF baseboards and 3" casings
- Triple pane & dual pane Low-E windows
- 1-2-5-10 National Home Warranty



Bi-level



1,554 sq.ft. +/-



3 Bedrooms



2 Bathrooms

SOLID FOUNDATIONS START HERE

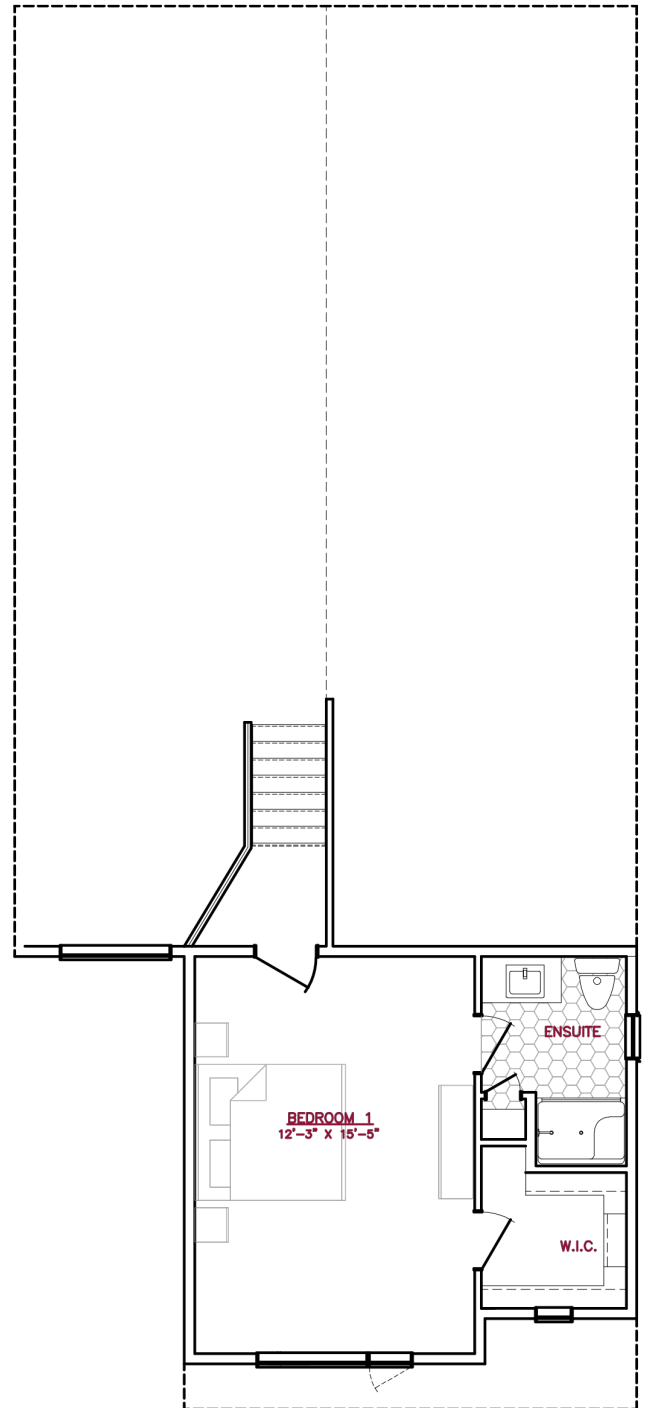
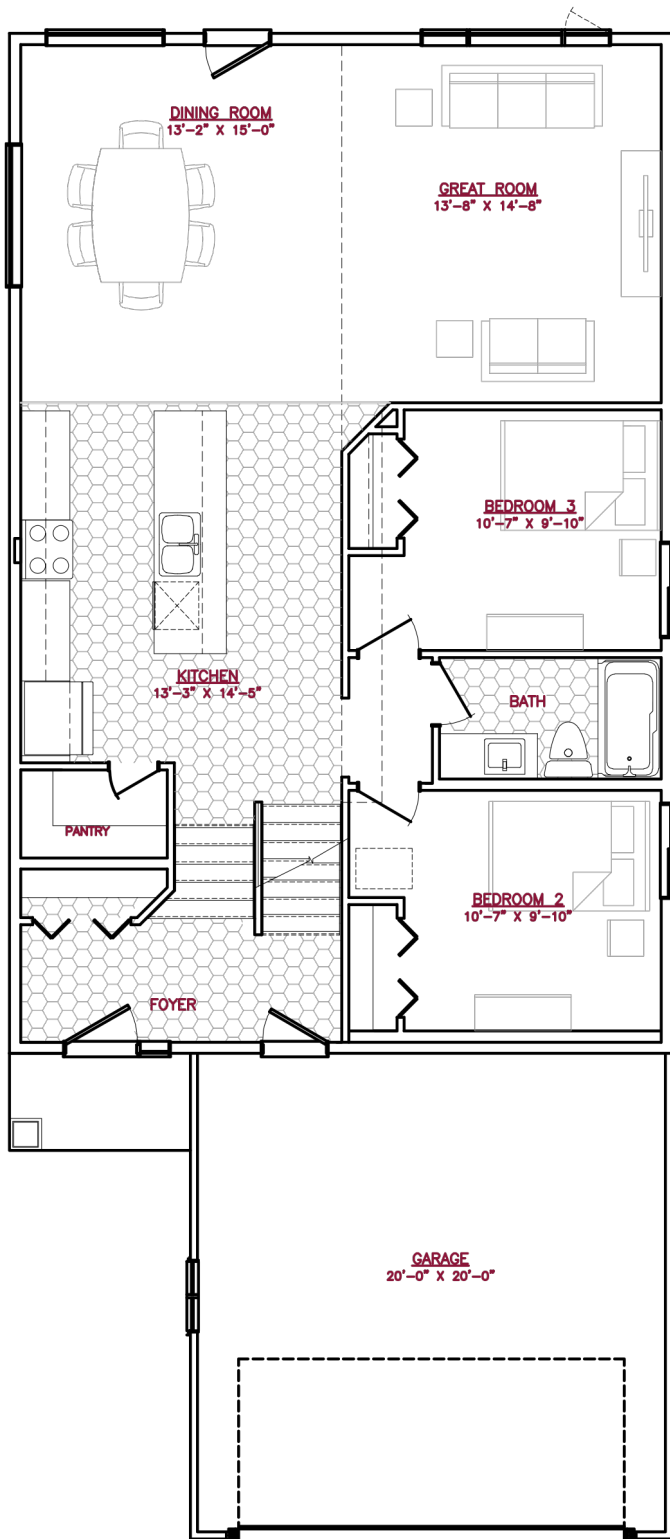


A QUALICO Company

331 PLAN



A QUALICO® Company



One Dr. David Friesen Drive
Winnipeg, Manitoba

Phone: (204) 224-4243
kensingtonhomes.com

All illustrations are artist's conception and may vary. Room dimensions are approximate. Windows and room sizes may vary with elevations. Mechanical equipment location and placement subject to change as required by building code and at discretion of builder. Furniture outlines for purpose of visualizing room layout only, furniture not included. Kensington Homes reserves the right to change material or specifications without notice.
Plan Rev-6/19/23