

CATALINA

420 PLAN

Elevation A



Highlighted Features Include:

- 20' x 22' attached garage
- Modern farmhouse bungalow
- Main floor laundry room/mudroom
- Gourmet kitchen with large island and pantry
- Primary bedroom with double closet and 3-piece ensuite
- 60 gallon hot water tank
- 200 amp panel
- Triple pane and dual pane Low-E windows
- 4" MDF baseboards and 3" casings
- 1-2-5-10 National Home Warranty



Bungalow



1,275 sq.ft. +/-



2 Bedrooms



2 Bathrooms

SOLID FOUNDATIONS START HERE

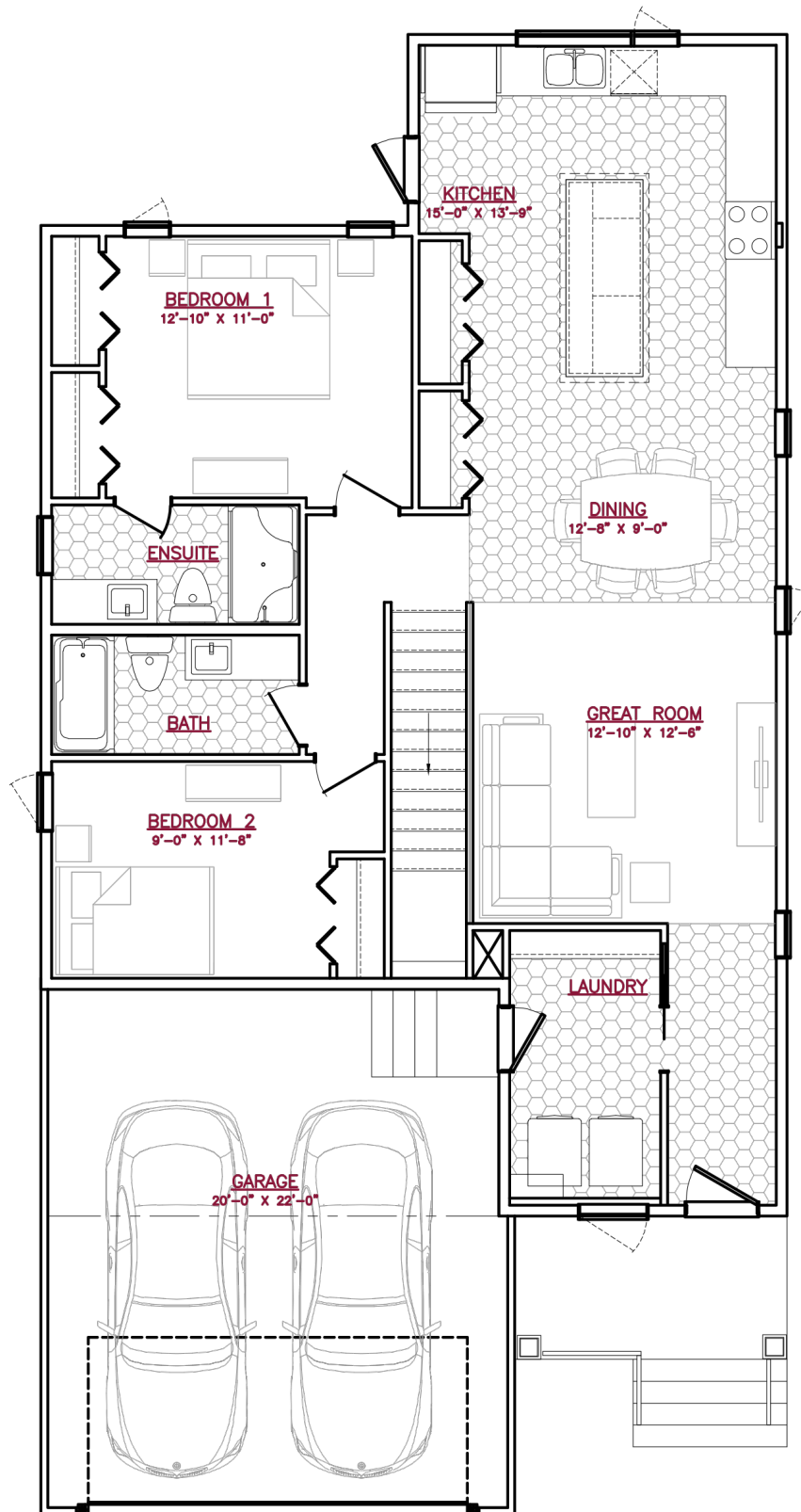


A QUALICO Company

420 PLAN



A QUALICO Company



One Dr. David Friesen Drive
Winnipeg, Manitoba

Phone: (204) 224-4243
kensingtonhomes.com

All illustrations are artist's conception and may vary. Room dimensions are approximate. Windows and room sizes may vary with elevations. Mechanical equipment location and placement subject to change as required by building code and at discretion of builder. Furniture outlines for purpose of visualizing room layout only, furniture not included. Kensington Homes reserves the right to change material or specifications without notice.
Plan Rev-8/15/23