

GRAYMONT

885 PLAN

Elevation A



Highlighted Features Include:

- 20' x 21' attached garage
- Spacious mud room
- Kitchen with oversized island and walk-in pantry
- Main floor micro office
- Second floor laundry room
- Versatile loft space
- Second floor open to below
- 200 amp panel
- 60 gallon hot water tank
- Triple pane and dual pane Low-E windows
- 4" MDF baseboards and 3" casings
- 1-2-5-10 National Home Warranty



2 Storey



2,146 sq.ft.^{+/-}



3 Bedrooms



2.5 Bathrooms



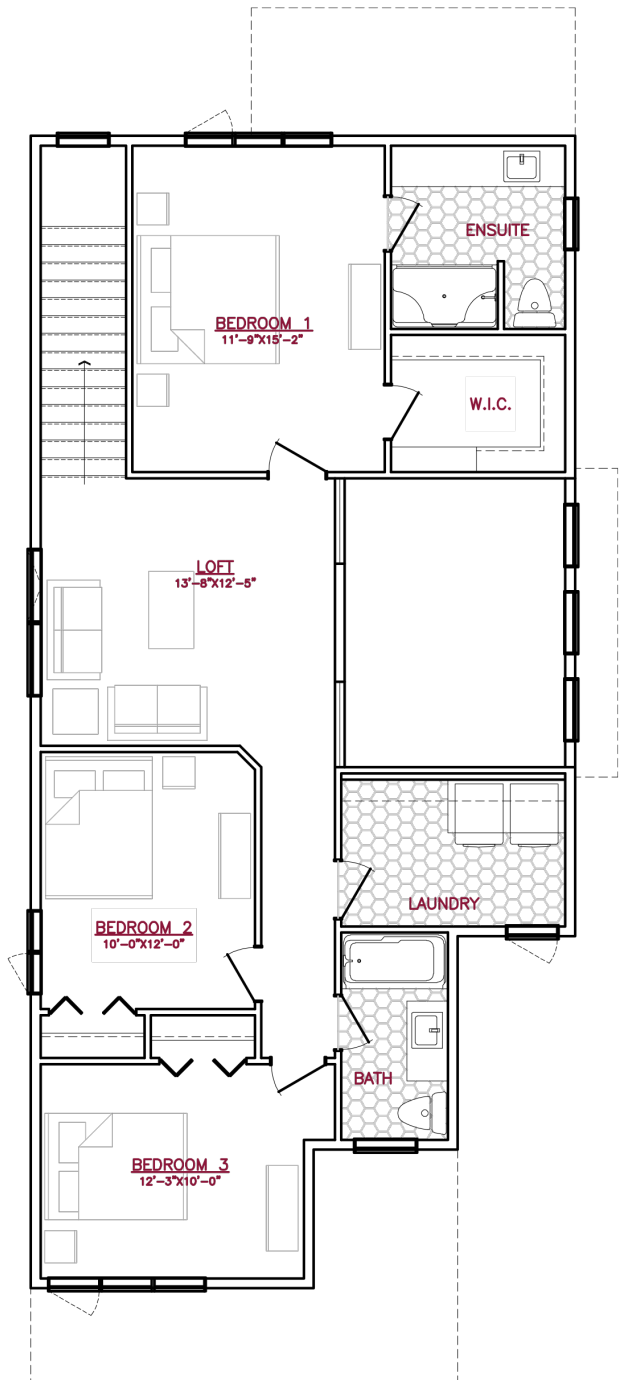
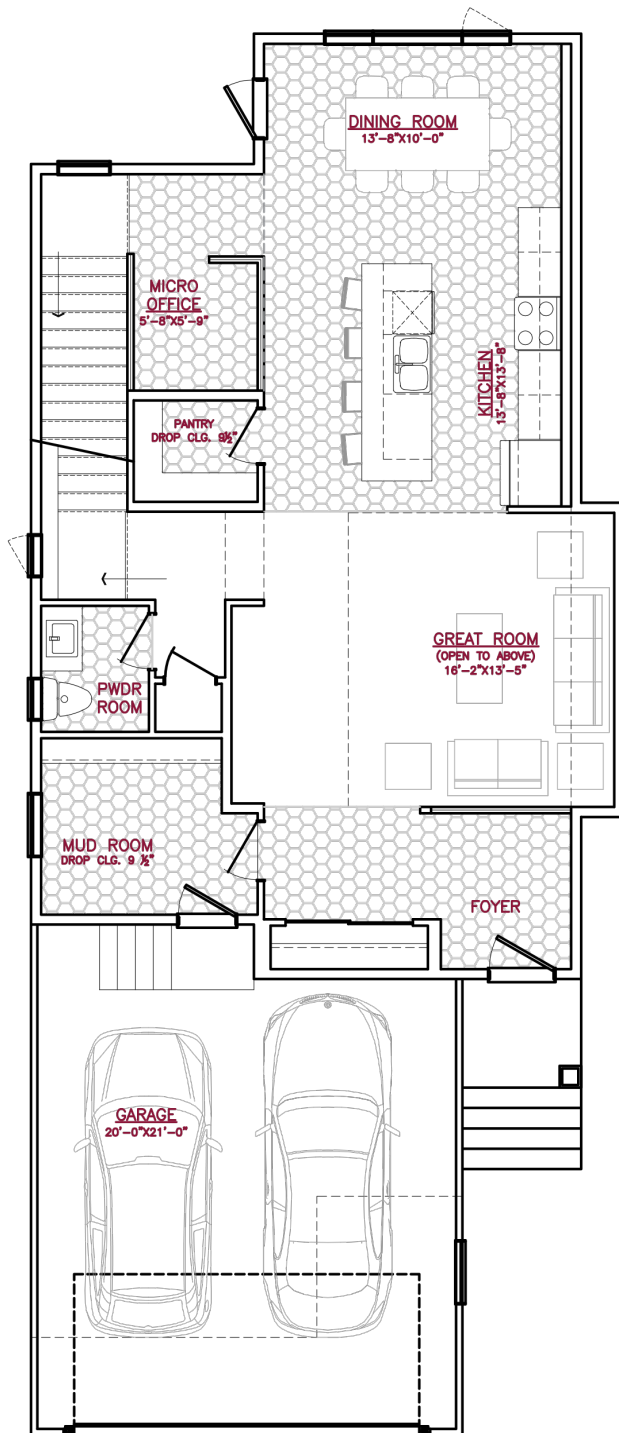
A QUALICO Company

SOLID FOUNDATIONS START HERE

885 PLAN



A QUALICO® Company



One Dr. David Friesen Drive
Winnipeg, Manitoba

Phone: (204) 224-4243
kensingtonhomes.com

All illustrations are artist's conception and may vary. Room dimensions are approximate. Windows and room sizes may vary with elevations. Mechanical equipment location and placement subject to change as required by building code and at discretion of builder. Furniture outlines for purpose of visualizing room layout only, furniture not included. Kensington Homes reserves the right to change material or specifications without notice.
Plan Rev-4/18/23