

HEARTSTONE

838 PLAN

Elevation A



Highlighted Features Include:

- 2 widths available (based on lot)
- 22' wide double attached garage
- Main floor bedroom and full bathroom
- Spacious walk-thru pantry
- Open-to-above great room
- Versatile loft space
- Second floor laundry room
- Primary bedroom with walk-in closet and 3-piece ensuite
- 200 amp panel
- 60 gallon hot water tank
- Triple pane and dual pane Low-E windows
- 4" MDF baseboards and 3" casings
- 1-2-5-10 National Home Warranty



2 Storey



2,161 sq.ft. +/-



4 Bedrooms



3 Bathrooms

SOLID FOUNDATIONS START HERE



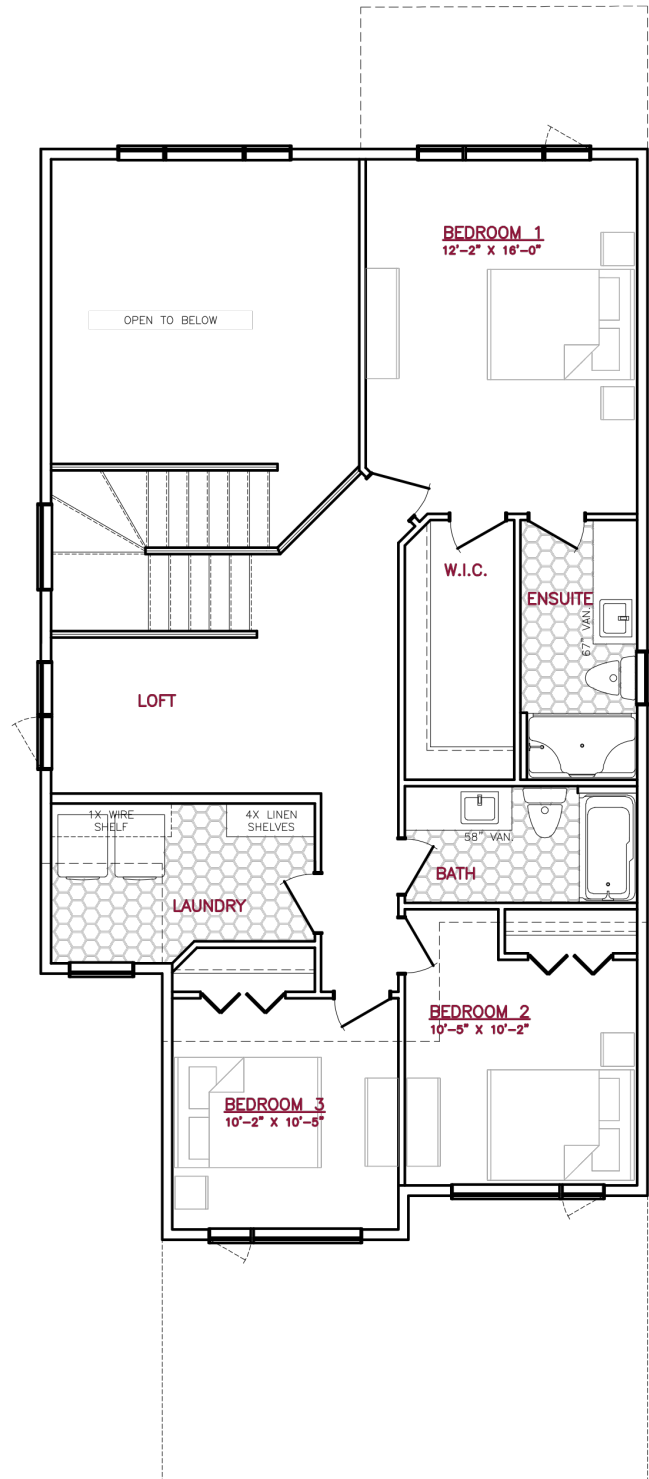
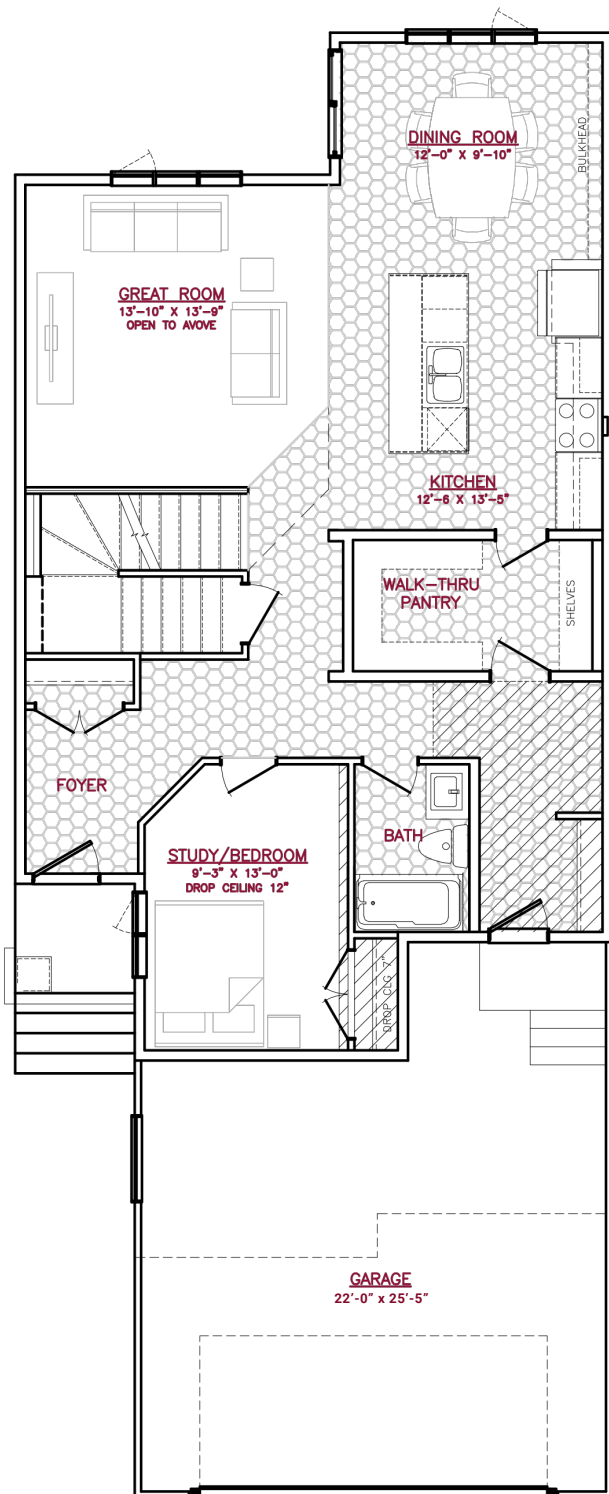
A QUALICO Company

838 PLAN

27.5' WIDE



A QUALICO® Company



One Dr. David Friesen Drive
Winnipeg, Manitoba

Phone: (204) 224-4243
kensingtonhomes.com

All illustrations are artist's conception and may vary. Room dimensions are approximate. Windows and room sizes may vary with elevations. Mechanical equipment location and placement subject to change as required by building code and at discretion of builder. Furniture outlines for purpose of visualizing room layout only, furniture not included. Kensington Homes reserves the right to change material or specifications without notice.
Plan Rev-8/23/23