



A QUALICO® Company

RIDGEFIELD

828 PLAN

(b-rev 5/19/21)

Elevation A

Not exactly as shown. Final drawings and elevation details are per offer to purchase and subject to architectural approval.

Highlighted Features Include:

- Open concept main floor layout with open ceilings in great room
- 19' x 22' double car garage
- Gourmet kitchen with walk-thru pantry and island
- Second floor laundry room with shelves
- Bedroom 3 has walk-in closet
- Large master suite with walk-in closet and ensuite
- Moen faucets
- LED lighting package
- 3" MDF flat baseboards
- Smooth painted ceilings
- Decora switches
- Triple pane & dual pane low-e windows, as per plan
- 1-2-5-10 National Home Warranty



Two-Storey



1831 sq. ft.

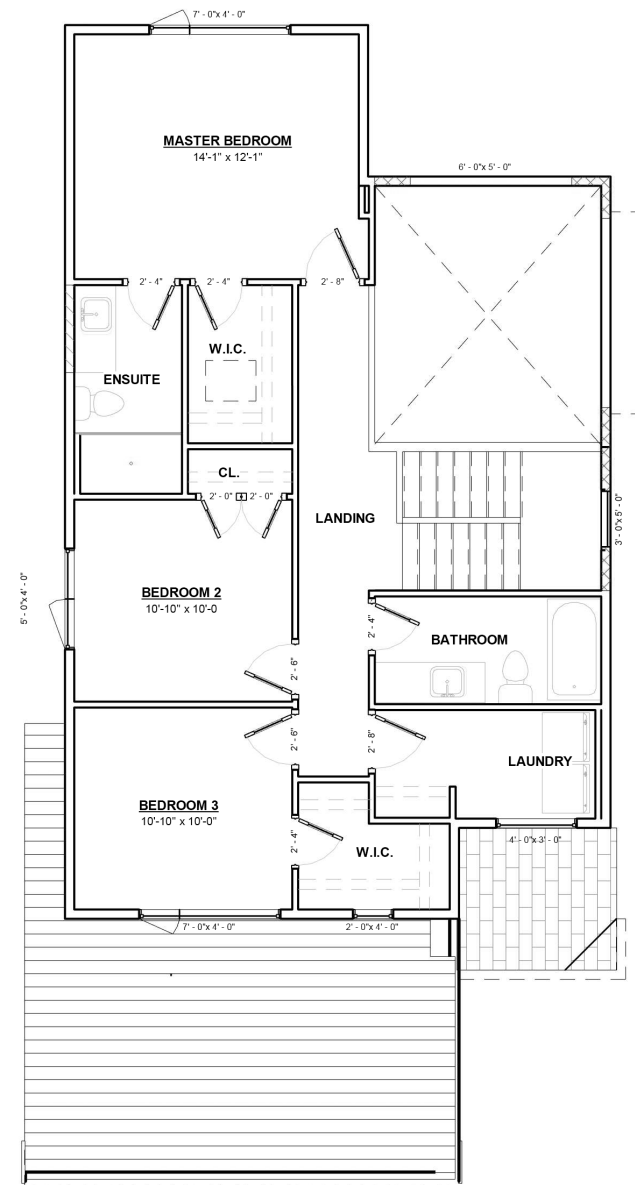
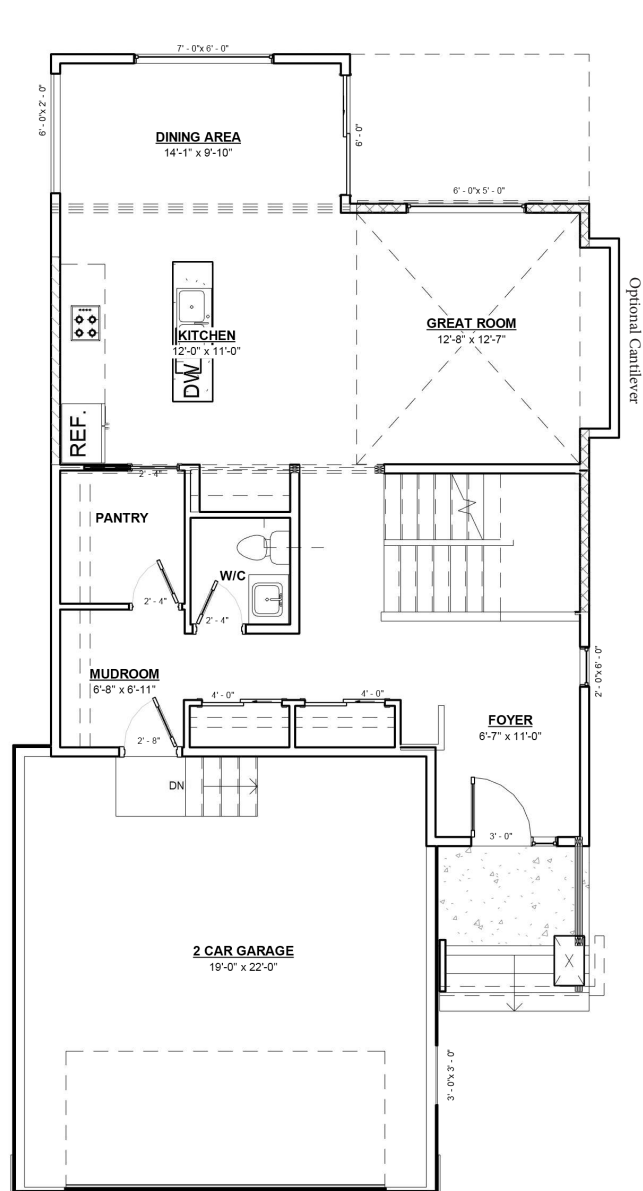


3 Bedrooms



2 1/2 Bathrooms

828 PLAN



One Dr. David Friesen Drive
Winnipeg, Manitoba

Phone: (204) 224-4243
kensingtonhomes.com

All illustrations are artist's conception and may vary. Room dimensions are approximate. Windows and room sizes may vary with elevations. Mechanical equipment location and placement subject to change as required by building code and at discretion of builder. Furniture outlines for purpose of visualizing room layout only, furniture not included. Kensington Homes reserves the right to change material or specifications without notice.



A QUALICO Company