

SOMERSET

750 PLAN

Elevation A



Highlighted Features Include:

- 2 plan widths available (based on lot)
- 19' x 22' double attached garage
- Enclosed mudroom with closet
- Kitchen with oversized island and massive pantry
- Versatile study/loft space
- Second floor laundry room
- Primary bedroom with walk-in closet and 3-piece ensuite
- 200 amp panel
- 60 gallon hot water tank
- Triple pane and dual pane Low-E windows
- 4" MDF baseboards and 3" casings
- 1-2-5-10 National Home Warranty



2 Storey



2,063 sq.ft. +/-



3 Bedrooms



2.5 Bathrooms

SOLID FOUNDATIONS START HERE



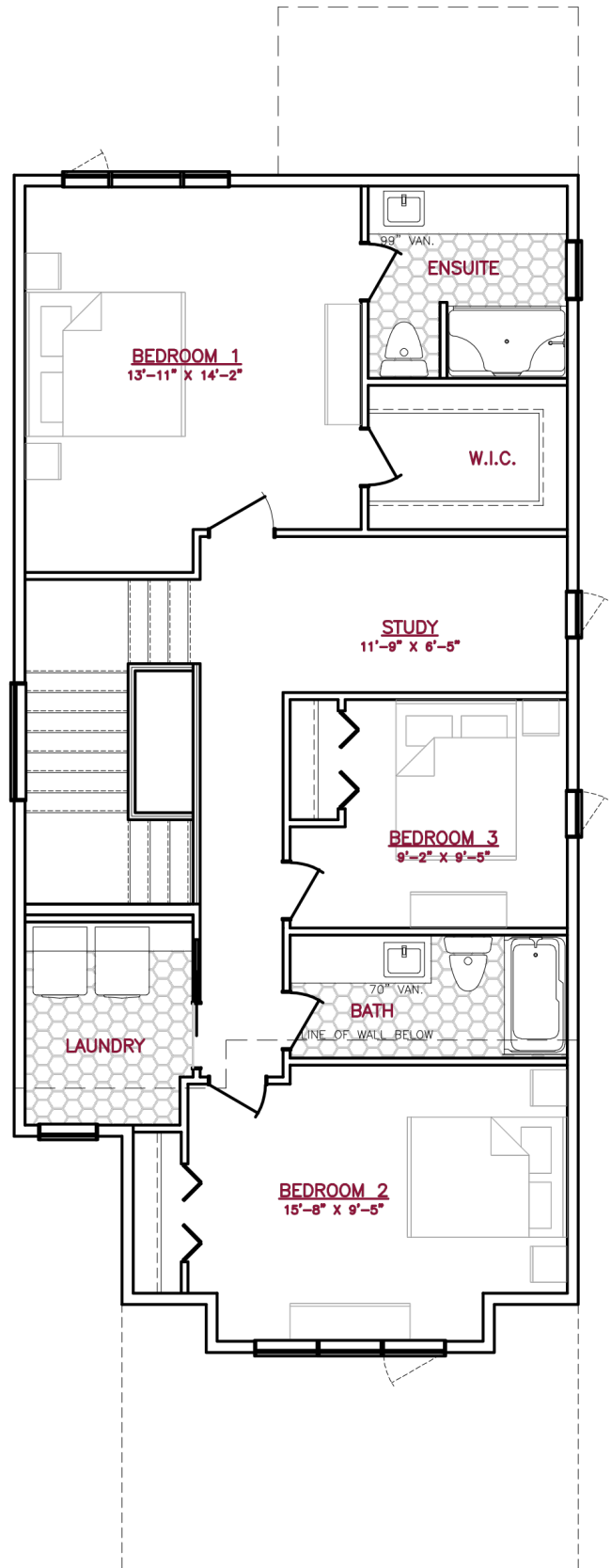
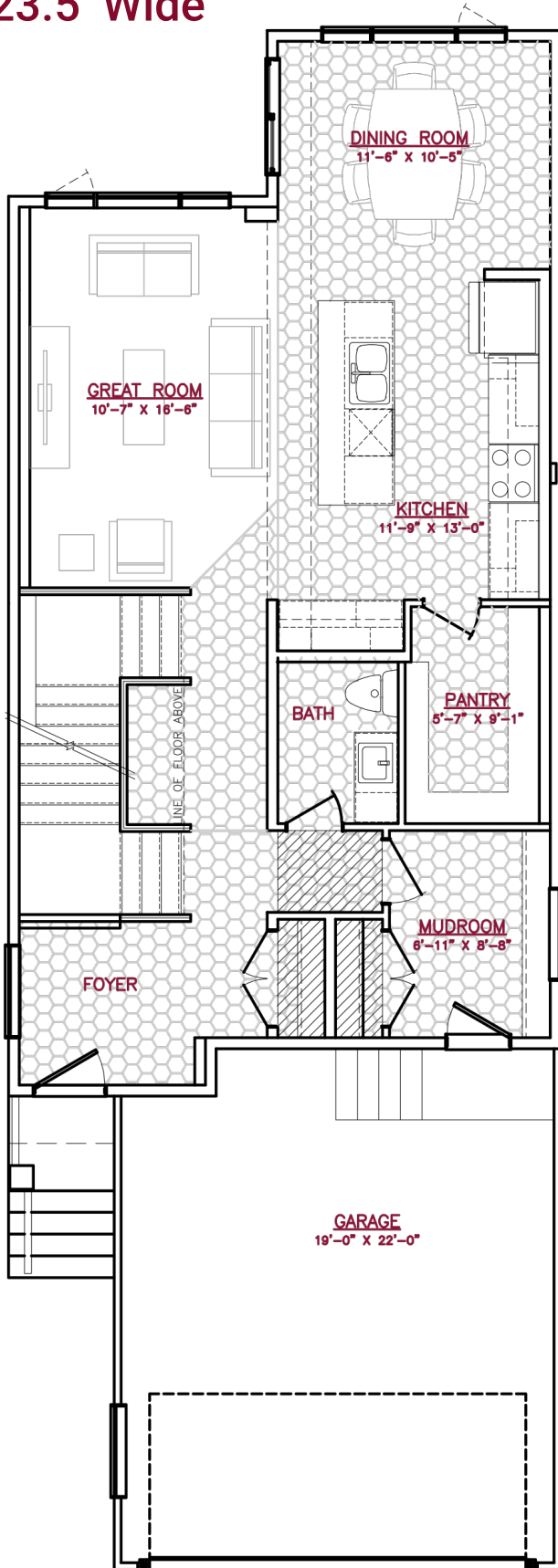
A QUALICO Company

750 PLAN

23.5' Wide



A QUALICO Company



One Dr. David Friesen Drive
Winnipeg, Manitoba

Phone: (204) 224-4243
kensingtonhomes.com

All illustrations are artist's conception and may vary. Room dimensions are approximate. Windows and room sizes may vary with elevations. Mechanical equipment location and placement subject to change as required by building code and at discretion of builder. Furniture outlines for purpose of visualizing room layout only, furniture not included. Kensington Homes reserves the right to change material or specifications without notice.
Plan Rev-8/15/23