

GROVEWOOD

1216 PLAN

Elevation A



Highlighted Features Include:

- Convenient mudroom
- Open concept design with front-facing great room
- Second floor laundry room
- Micro office on second floor
- Primary bedroom with ensuite and large walk-in closet
- Triple pane and dual pane Low-E windows
- 200 amp panel
- 60 gallon hot water tank
- 4" MDF baseboards and 3" casings
- 1-2-5-10 National Home Warranty



2 Storey



1,696 sq.ft. +/-



3 Bedrooms



2.5 Bathrooms

SOLID FOUNDATIONS START HERE

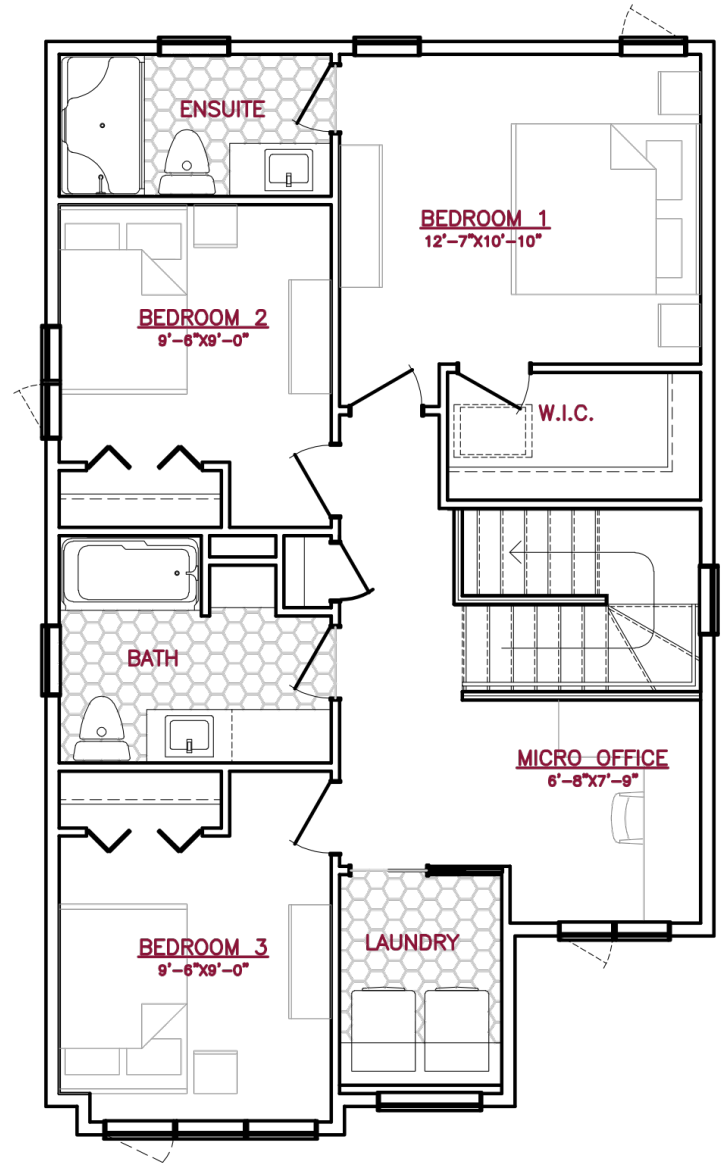
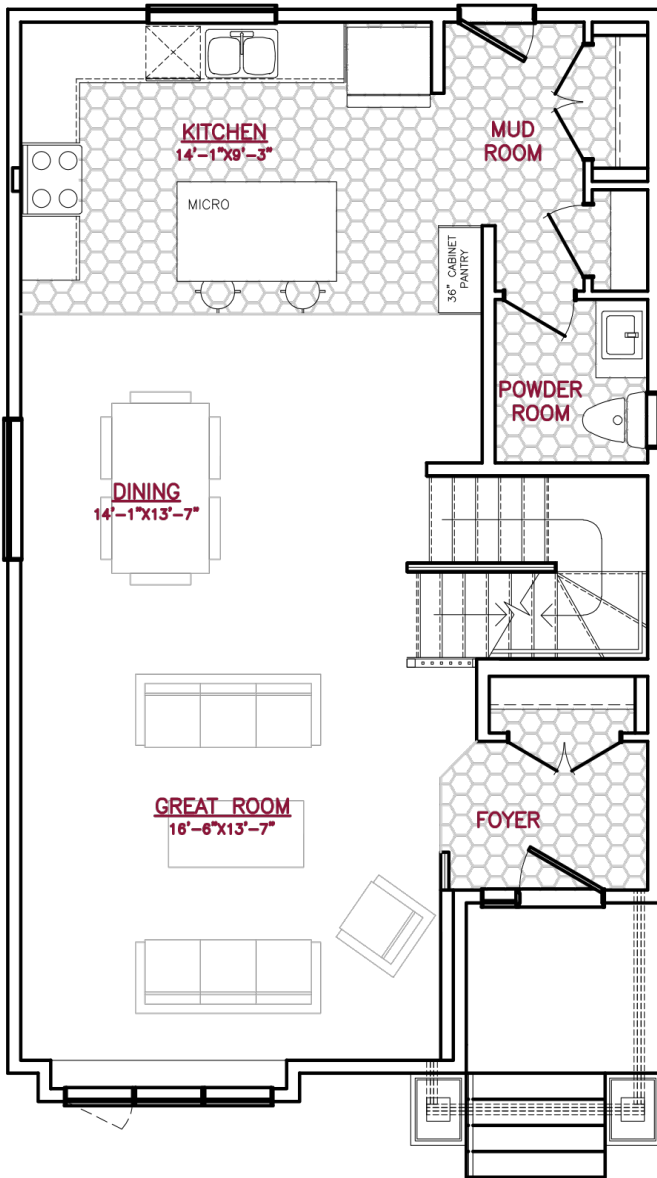


A QUALICO Company

1216 PLAN



A QUALICO® Company



One Dr. David Friesen Drive
Winnipeg, Manitoba

Phone: (204) 224-4243
kensingtonhomes.com

All illustrations are artist's conception and may vary. Room dimensions are approximate. Windows and room sizes may vary with elevations. Mechanical equipment location and placement subject to change as required by building code and at discretion of builder. Furniture outlines for purpose of visualizing room layout only, furniture not included. Kensington Homes reserves the right to change material or specifications without notice.
Plan Rev-4/18/23