

# BROOKDALE

920 PLAN A

Elevation A



## Highlighted Features Include:

- 3 plan widths available (based on lot)
- 19' x 22' double attached garage
- Kitchen with huge pantry
- Family room and great room space
- Versatile loft space and study space
- Second floor laundry room
- Walk-in closets to all bedrooms
- Spacious primary bedroom with 3-piece ensuite
- 200 amp panel
- 60 gallon hot water tank
- Triple pane and dual pane Low-E windows
- 4" MDF baseboards and 3" casings
- 1-2-5-10 National Home Warranty



2 Storey



2,184 sq.ft. +/-



3 Bedrooms



2.5 Bathrooms



A QUALICO Company

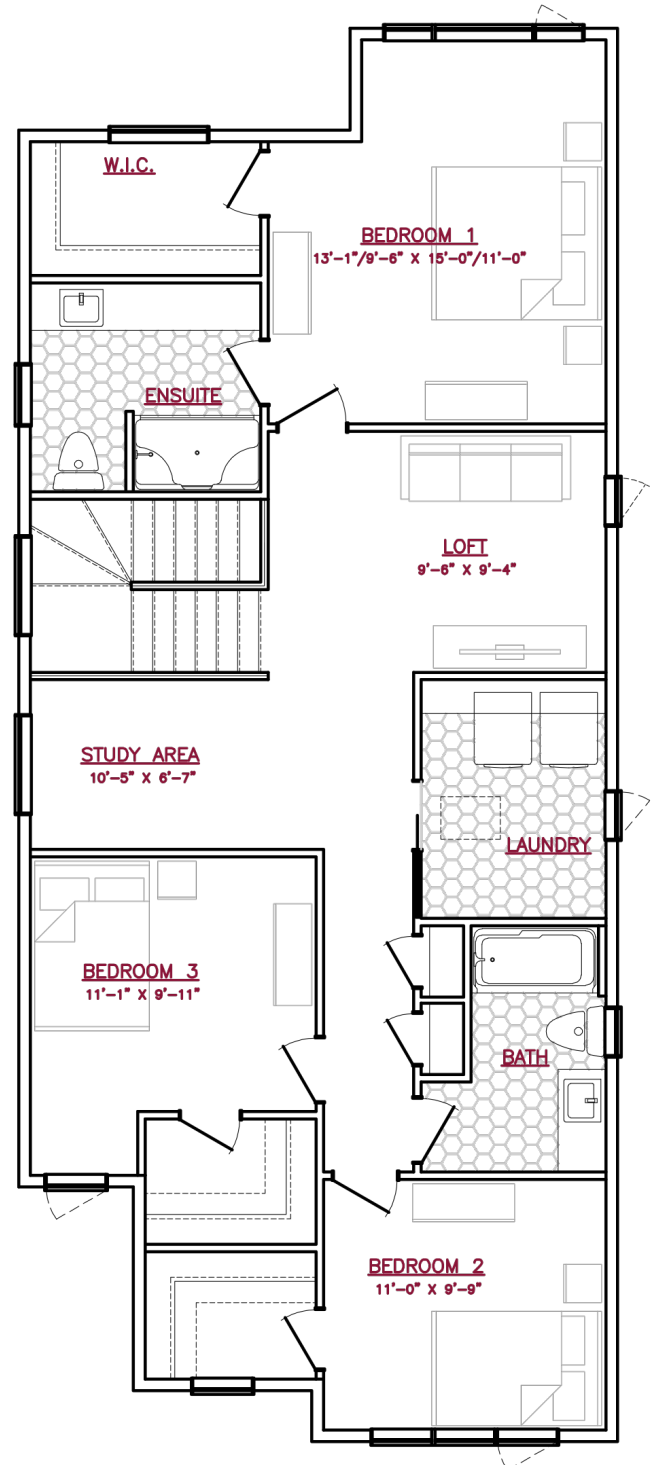
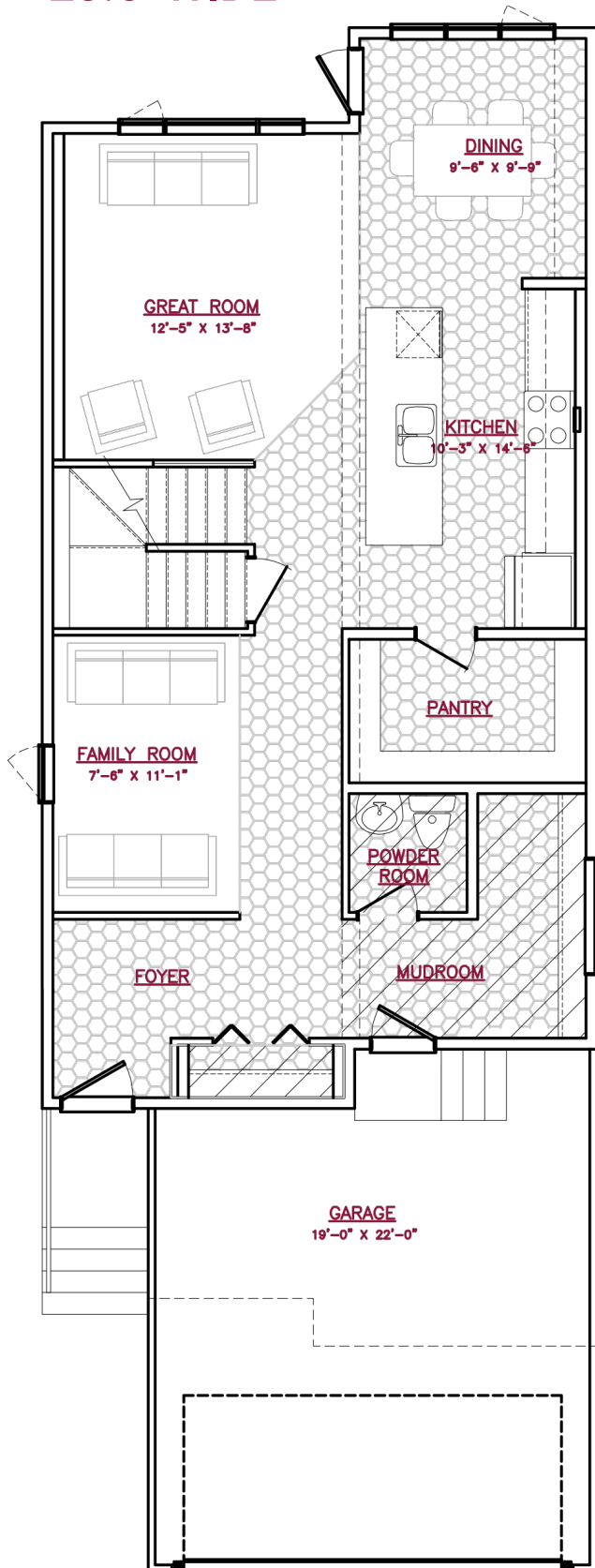
SOLID FOUNDATIONS START HERE

# 920 PLAN A

23.5' WIDE



A QUALICO Company



One Dr. David Friesen Drive  
Winnipeg, Manitoba

Phone: (204) 224-4243  
kensingtonhomes.com

All illustrations are artist's conception and may vary. Room dimensions are approximate. Windows and room sizes may vary with elevations. Mechanical equipment location and placement subject to change as required by building code and at discretion of builder. Furniture outlines for purpose of visualizing room layout only, furniture not included. Kensington Homes reserves the right to change material or specifications without notice.  
Plan Rev-8/24/23