

OCEANVIEW

922 PLAN

Elevation A

Elevation B



Highlighted Features Include:

- 19' x 22' double attached garage
- Large walk-in closet in foyer
- Kitchen with walk-in pantry and large island
- Versatile flex space on second floor
- Second floor laundry room
- Primary bedroom with walk-in closet and 3-piece ensuite
- 200 amp panel
- 60 gallon hot water tank
- Triple pane and dual pane Low-E windows
- 4" MDF baseboards and 3" casings
- 1-2-5-10 National Home Warranty



2 Storey



1,596 sq.ft. +/-



3 Bedrooms



2.5 Bathrooms

SOLID FOUNDATIONS START HERE

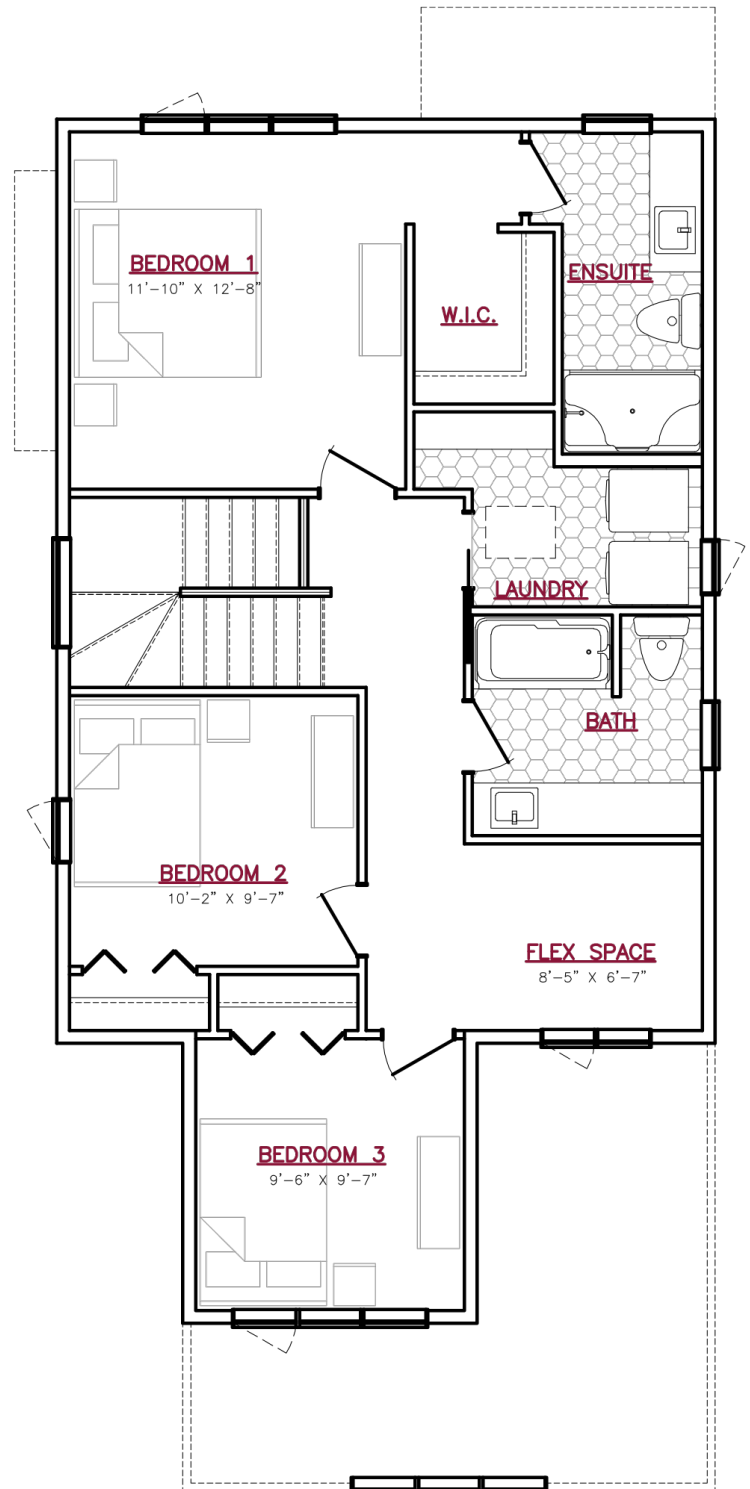
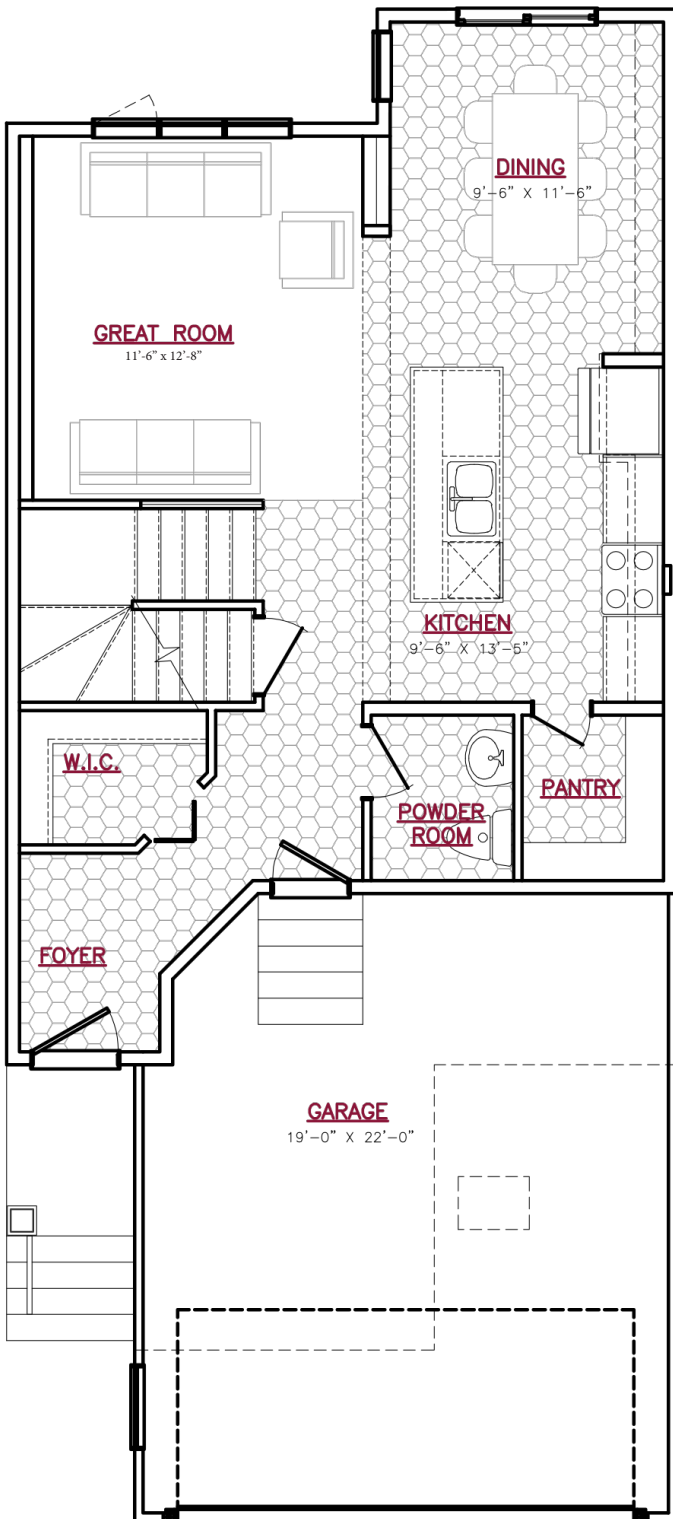


A QUALICO Company

922 PLAN



A QUALICO Company



One Dr. David Friesen Drive
Winnipeg, Manitoba

Phone: (204) 224-4243
kensingtonhomes.com

All illustrations are artist's conception and may vary. Room dimensions are approximate. Windows and room sizes may vary with elevations. Mechanical equipment location and placement subject to change as required by building code and at discretion of builder. Furniture outlines for purpose of visualizing room layout only, furniture not included. Kensington Homes reserves the right to change material or specifications without notice.
Plan Rev-8/24/23