

PRAIRIEHAVEN

825 PLAN

Elevation A

Elevation D



Elevation E



Highlighted Features Include:

- 20' x 22' double car garage
- Open concept design
- Spacious foyer
- Kitchen with island and walk-in pantry
- Main floor study
- Main floor laundry / mudroom
- Open-to-above great room
- High efficiency furnace
- Triple pane and dual Low-E windows
- 4" MDF baseboards and 3" casings
- 1-2-5-10 National Home Warranty



2 Storey



1,841 sq.ft.^{+/-}



3 Bedrooms



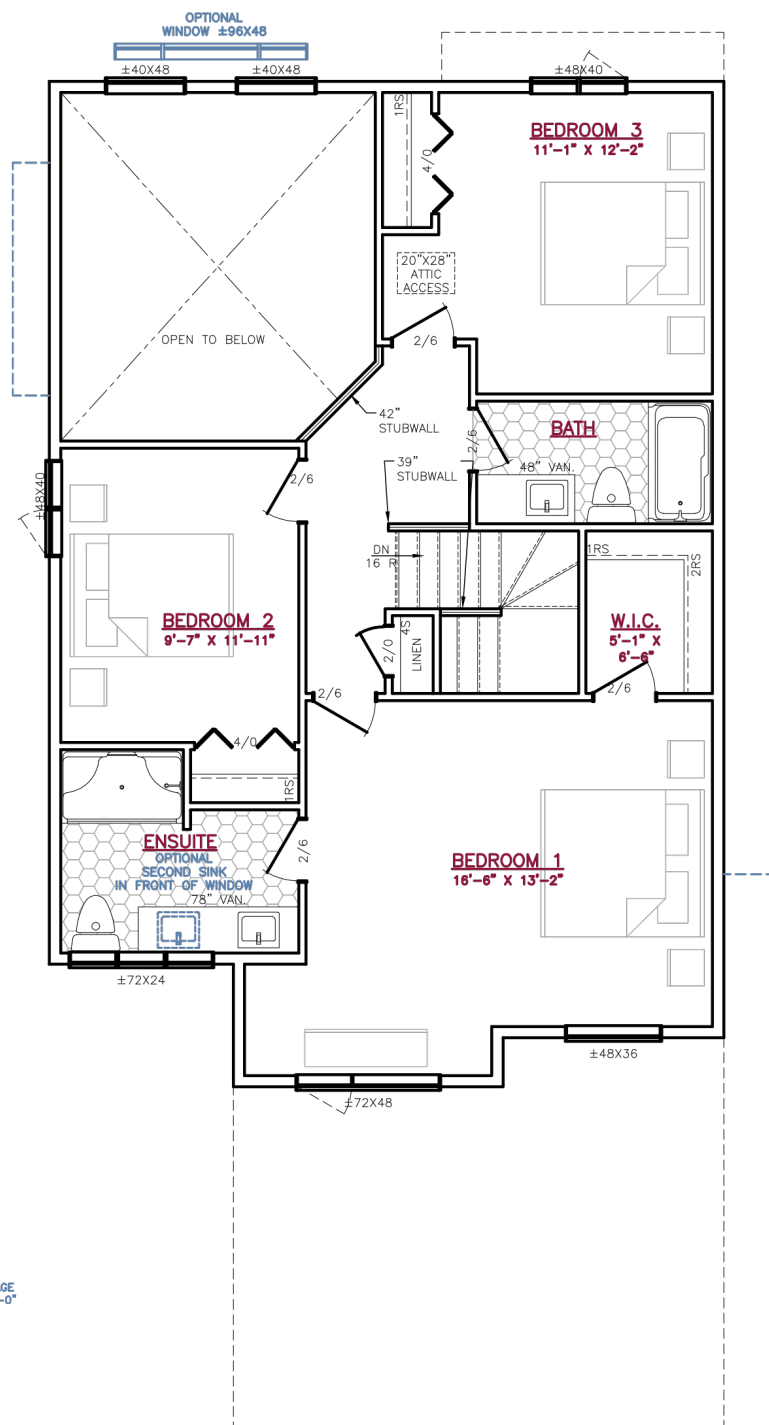
2.5 Bathrooms

BUILD YOUR NEW BEGINNING



A QUALICO Company

A QUALICO® Company

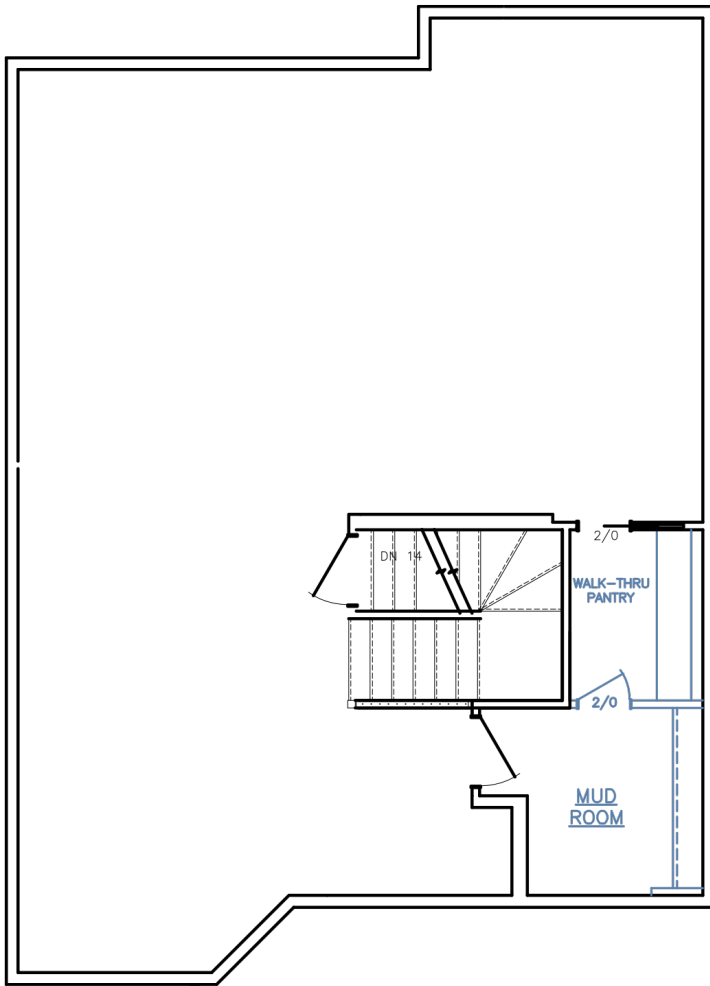


Plan Rev - 9/25/24

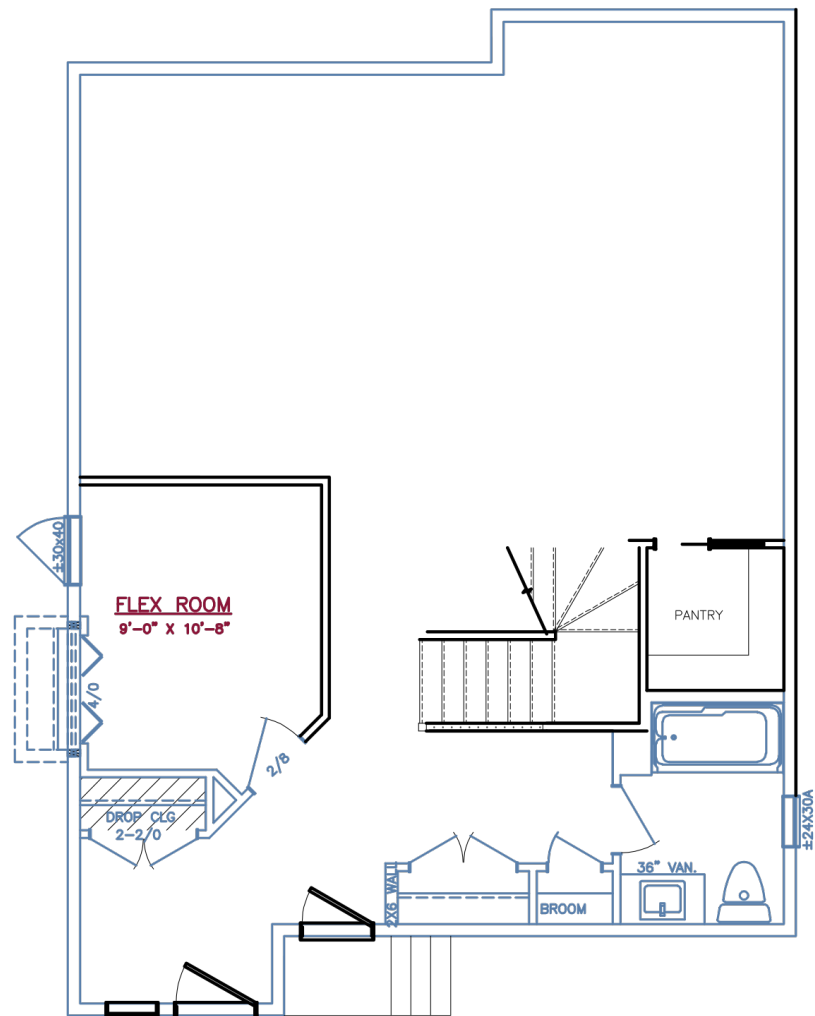
825 PLAN OPTIONS



A QUALICO® Company



Main Floor Walk-Thru Pantry Option

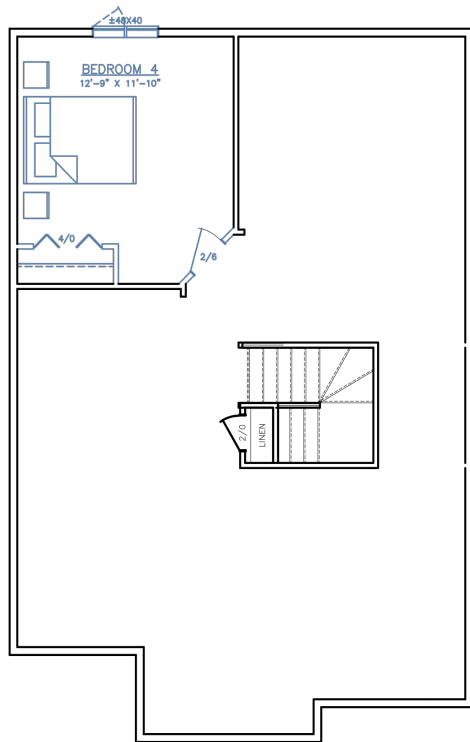


Main Floor Bedroom Option
with Full Bathroom

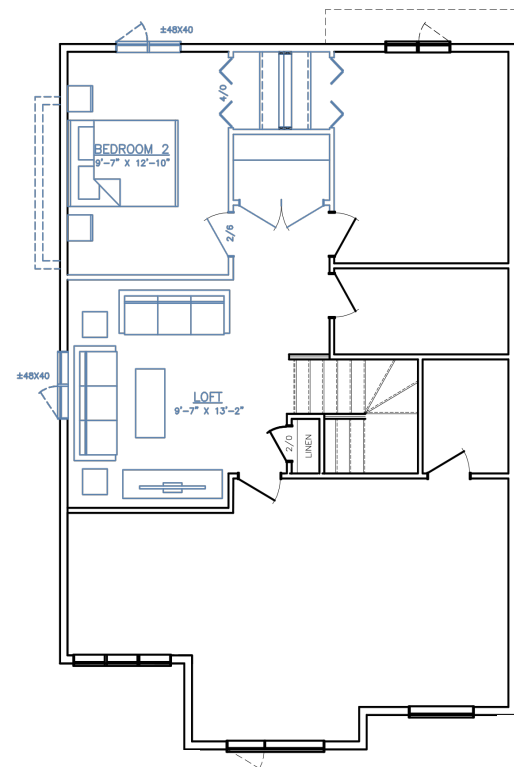
825 PLAN OPTIONS



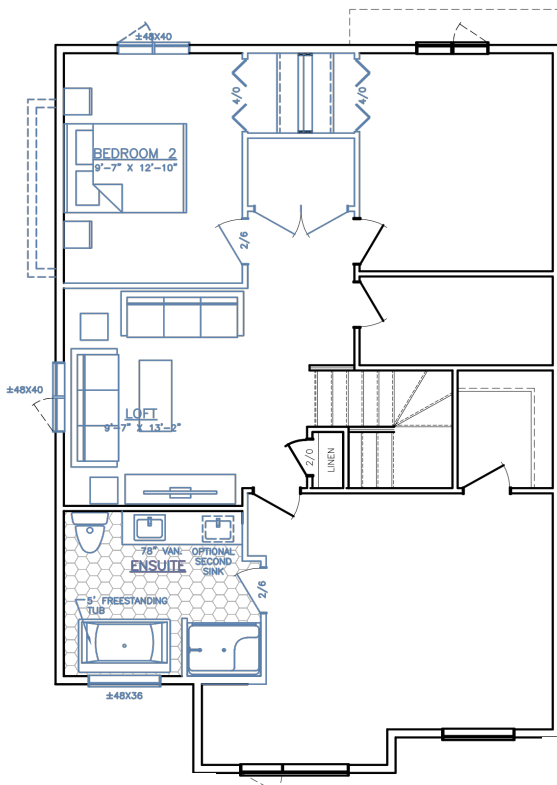
A QUALICO® Company



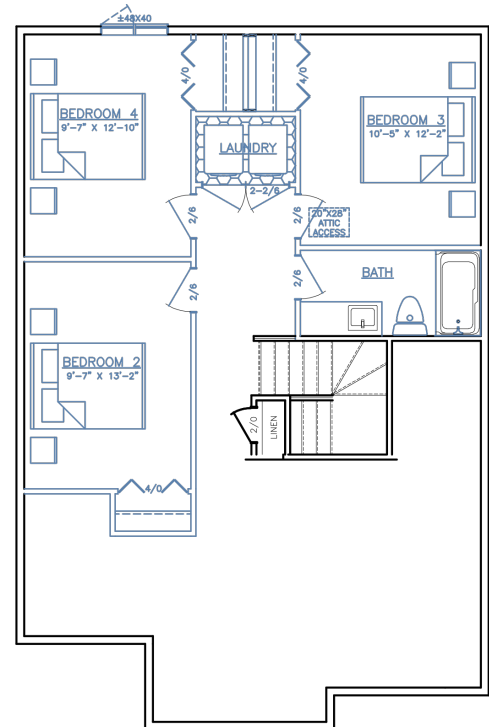
Second Floor 4th Bedroom



Second Floor Loft Option



Second Floor Loft and Deluxe Ensuite Option



Second floor laundry and 4th bedroom option

One Dr. David Friesen Drive
Winnipeg, Manitoba

Phone: (204) 224-4243
kensingtonhomes.com

All illustrations are artist's conception and may vary. Room dimensions are approximate. Windows and room sizes may vary with elevations. Mechanical equipment location and placement subject to change as required by building code and at discretion of builder. Furniture outlines for purpose of visualizing room layout only, furniture not included. Kensington Homes reserves the right to change material or specifications without notice.

Plan Rev - 9/25/24