

MONTVILLE

848 PLAN

Elevation A



Highlighted Features Include:

- 19' x 24' double attached garage
- Kitchen includes island and large walk-in pantry
- Second floor laundry
- Primary bedroom with walk-in closet and ensuite
- 200 amp panel
- 60 gallon hot water tank
- Triple pane and dual pane Low-E windows
- 4" MDF baseboards and 3" casings
- 1-2-5-10 National Home Warranty



2 Storey



1,658 sq.ft.^{+/-}



3 Bedrooms



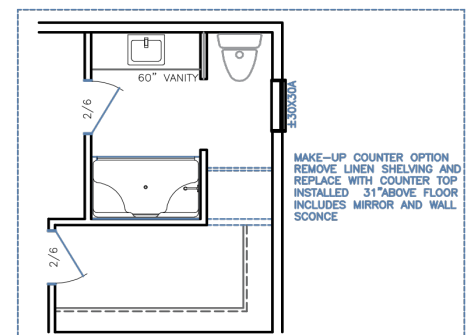
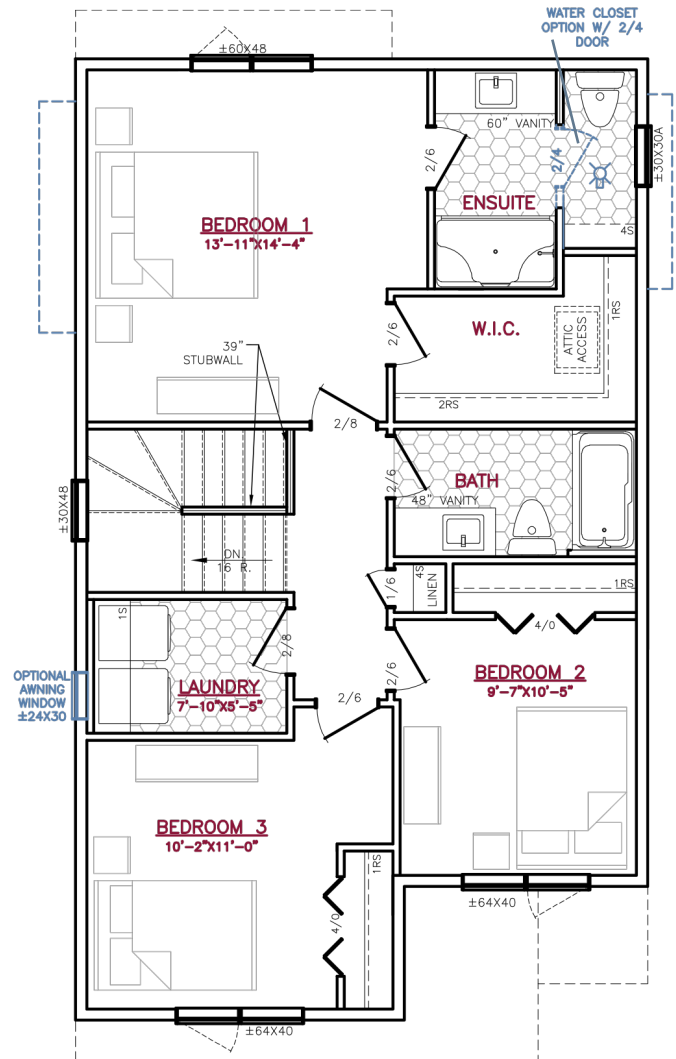
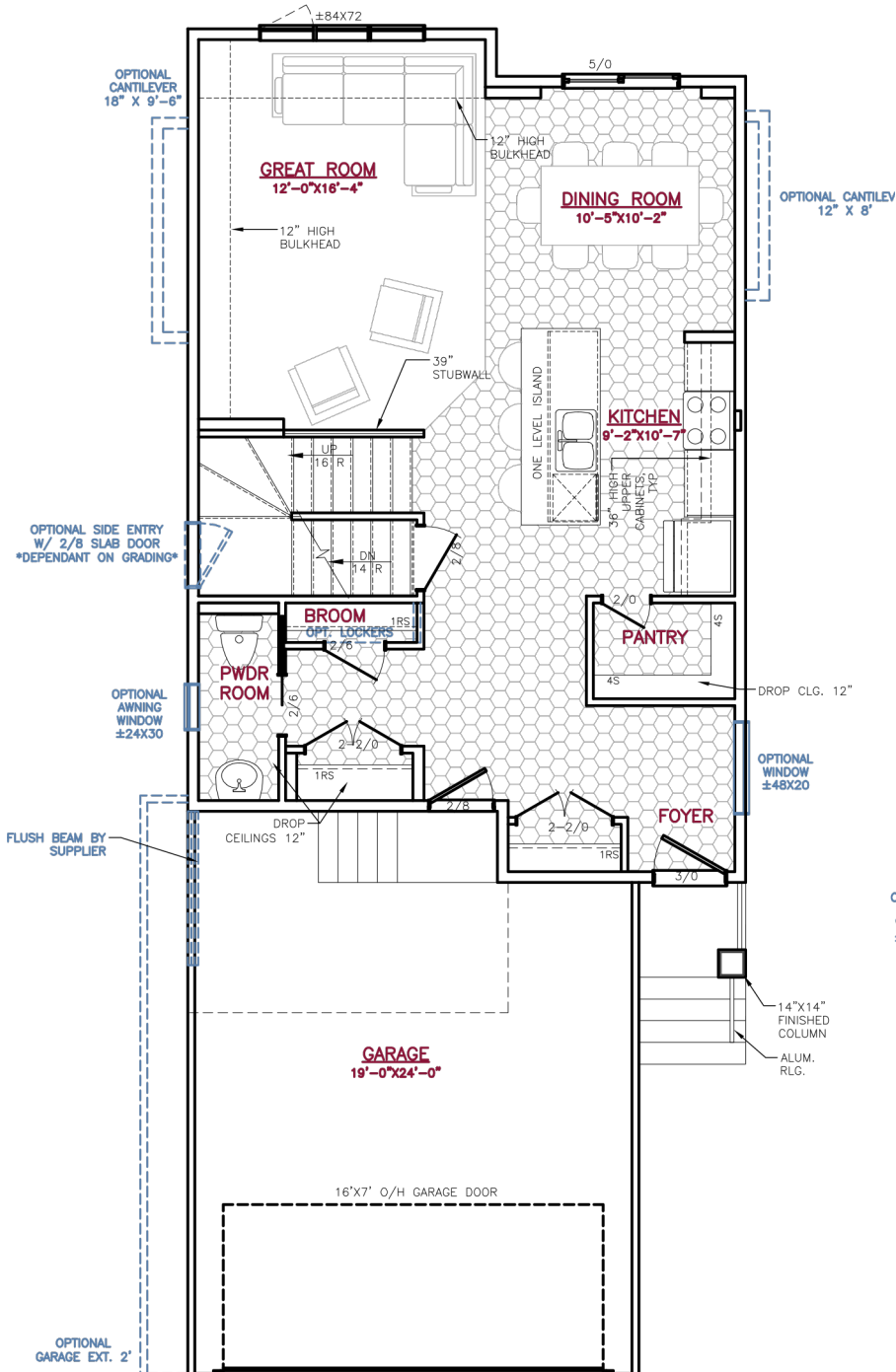
2.5 Bathrooms



A QUALICO Company

BUILD YOUR NEW BEGINNING

A QUALICO® Company



One Dr. David Friesen Drive
Winnipeg, Manitoba

Phone: (204) 224-4243
kensingtonhomes.com

All illustrations are artist's conception and may vary. Room dimensions are approximate. Windows and room sizes may vary with elevations. Mechanical equipment location and placement subject to change as required by building code and at discretion of builder. Furniture outlines for purpose of visualizing room layout only, furniture not included. Kensington Homes reserves the right to change material or specifications without notice.

Plan Rev-04.02.2025