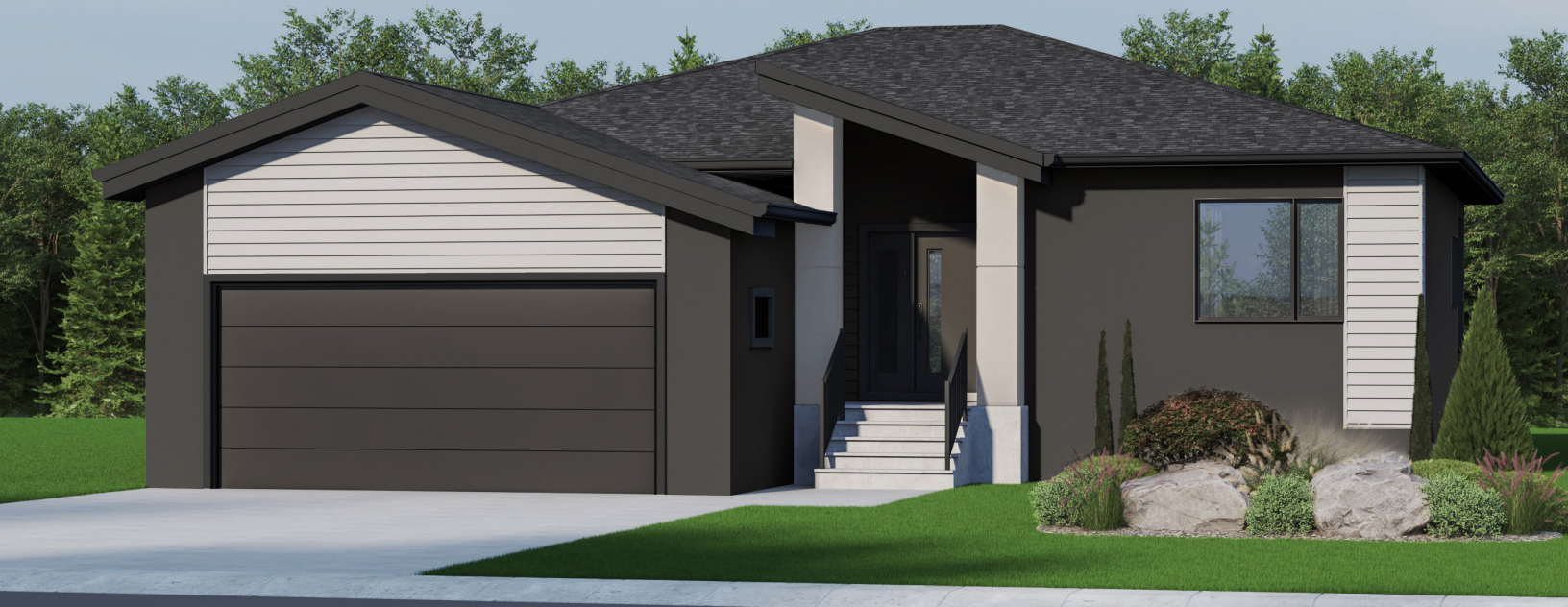


STRATFORD

1047 PLAN

Elevation A



Highlighted Features Include:

- 22' x 22' double car garage
- Open concept design
- Spacious mudroom with walk-in closet and laundry
- 9' ceilings throughout
- Primary bedroom with ensuite and walk-in closet
- 60 gallon hot water tank
- 200 amp panel
- Triple pane and dual pane Low-E windows
- 4" MDF baseboards and 3" casings
- 1-2-5-10 National Home Warranty



Bungalow



1,477 sq.ft. +/-



3 Bedrooms



2 Bathrooms



A QUALICO Company

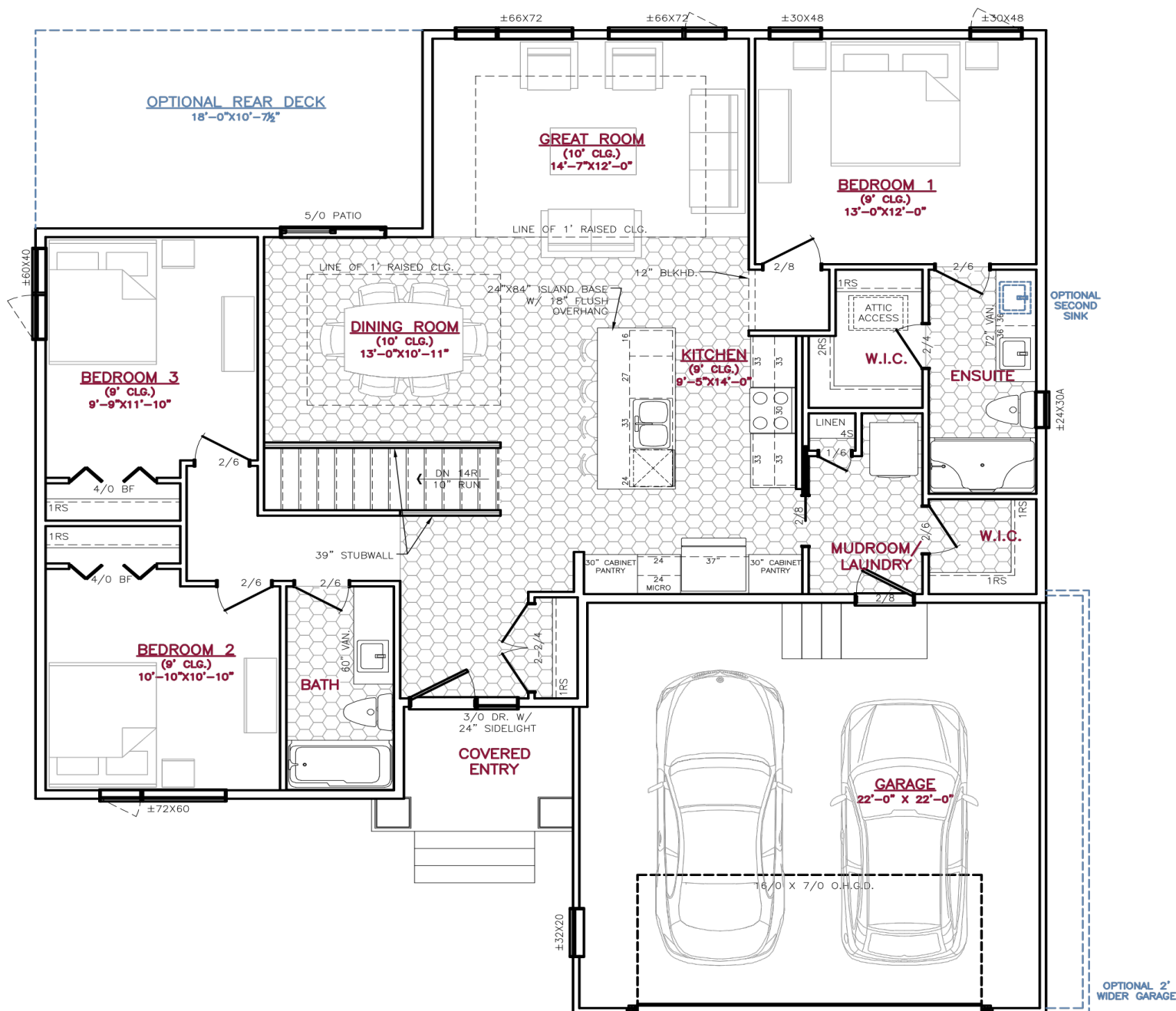
BUILD YOUR NEW BEGINNING

Not exactly as shown. Final drawings and elevation details per offer to purchase and subject to architectural approval. rev-11/19/25

1047 PLAN



A QUALICO® Company



One Dr. David Friesen Drive
Winnipeg, Manitoba

Phone: (204) 224-4243
kensingtonhomes.com

All illustrations are artist's conception and may vary. Room dimensions are approximate. Windows and room sizes may vary with elevations. Mechanical equipment location and placement subject to change as required by building code and at discretion of builder. Furniture outlines for purpose of visualizing room layout only, furniture not included. Kensington Homes reserves the right to change material or specifications without notice.

Plan Rev-6/25/25